

Forest Service proposes to eliminate prairie dog protections vital to native wildlife on Thunder Basin National Grassland.

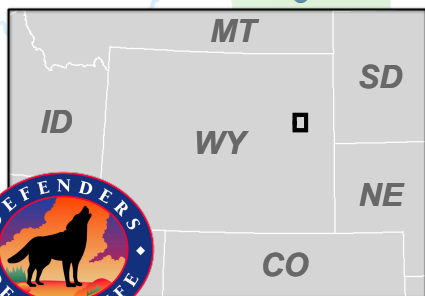
Less than 10% of the national grassland has protections for prairie dogs. Removing these protections will **allow the poisoning and shooting of prairie dogs** in one of their only remaining conservation areas.



The **mountain plover** is among the native prairie wildlife that **depend on prairie dog habitat** for their **survival**.



The **burrowing owl** also relies on prairie dog habitat, as do **ferruginous hawks, swift foxes, and the endangered black-footed ferret**.



- Swift Fox Den
- Burrowing Owl Nest
- Mountain Plover Nest
- Ferruginous Hawk Sighting
- ▭ Prairie Dog Conservation Area
- Prairie Dog Range Maximum Extent
- Thunder Basin National Grassland (NFS)

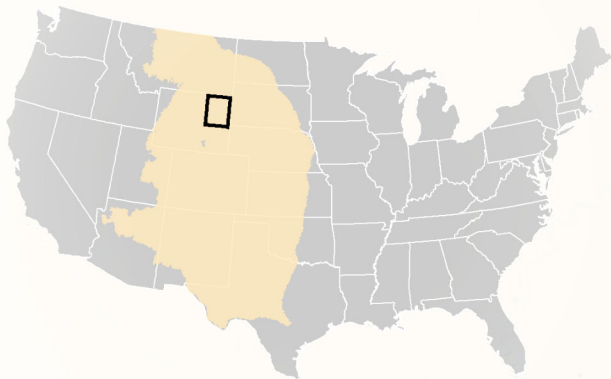


0 1 2 4 6 Miles



Less than 10% of Thunder Basin National Grassland contains protections for prairie dogs, on which so many other native species depend.

Wildlife populations thrive within this core area of Thunder Basin where prairie dog colonies are currently **protected** from **poisoning and shooting**. This **optimal habitat** is vital to **mountain plover**, **burrowing owl**, **swift fox**, and the **endangered black-footed ferret**.



Black-Footed Ferret Historic Range

Thunder Basin National Grassland contains **one of the only remaining large prairie dog complexes within the endangered black-footed ferret's historic range**. Ferrets require very large prairie dog complexes for survival because (1) ferrets live in prairie dog burrows and (2) prairie dogs are more than 90% of the black-footed ferret's diet. This makes Thunder Basin's prairie dog complex important for the black-footed ferret recovery effort.



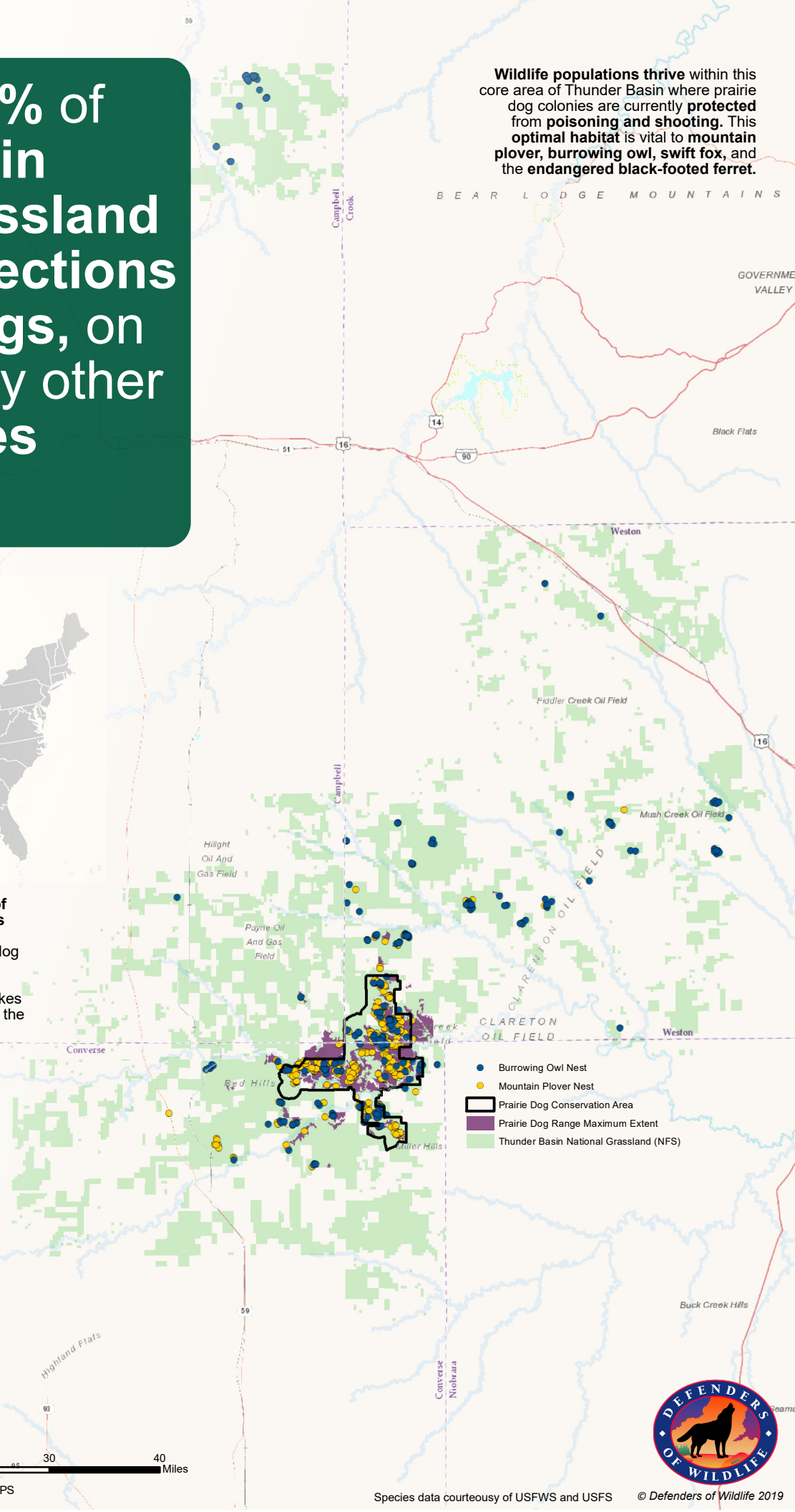
USFWS

Thunder Basin was once **home to black-footed ferrets** and it remains an **important part of their recovery**. Without maintaining Thunder Basin's current protections for prairie dogs, ferrets will never be able to call Thunder Basin home again.



0 5 10 20 30 40 Miles

Service Layer Credits: Sources: Esri, Garmin, USGS, NPS



Species data courtesy of USFWS and USFS

© Defenders of Wildlife 2019